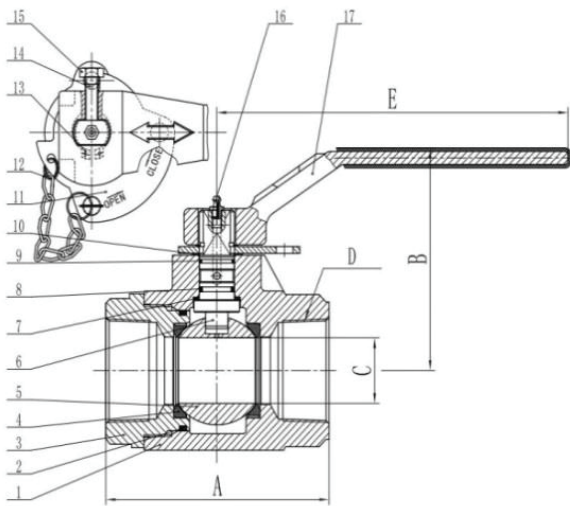


FORGED STEEL BALL VALVE BT50DR SERIES

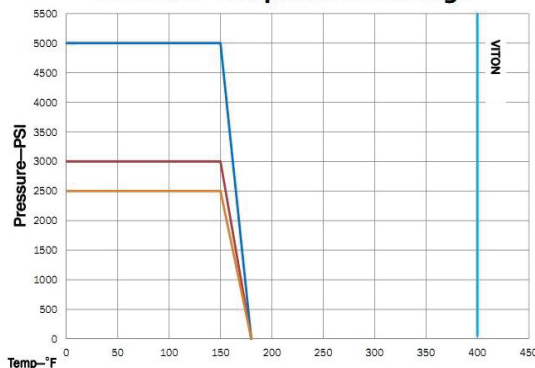


Features

- 5000 W.O.G. Standard Port
- Forged Steel A105 Body
- Blow out proof stem
- Delrin/nylon (optional) seat
- Inspection and test: API598
- Threads conform to ASME B1.20.1(NPT)
- NACE MR-01-75



Pressure Temperature Ratings



Parts & Materials

No.	Part	Material
1	BODY	ASTM A105
2	BODY SEAL	VITON
3	ADAPTER	ASTM A105
4	SEATS	DELKIN
5	BALL	SS420
6	STEM	ASTM A276 420
7	THRUST BEARING	PTFE
8	STEM SEAL	VITON
9	STEM SEAL	VITON
10	STEM BEARING	PTFE
11	STOP PLATE	STEEL PLATE
12	PIN WITH CHAIN	STAINLESS STEEL
13	RETAINER RING	SPRING STEEL
14	STOP PIN	SPRING STEEL
15	HEXAGON BOLTS	CARBON STEEL
16	GREASE ZERK	CARBON STEEL
17	HANDLE	DUCTILE IRON

Dimensions(in)

Size	Part#	PORT	Pressure	Weight (lbs)	A	B	C	D	E	Torque In.lbs
2"	B02T50DR	RP	5000	14.44	5.51	5.07	1.50	11.5NPT	10.00	2700

*Torque at Full Rated Pressure